

# The effect of transverse cracking on longitudinal tensile strength

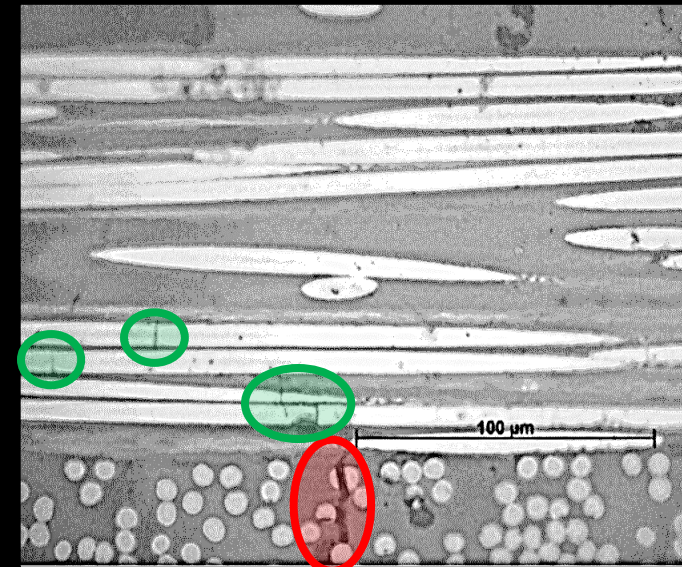
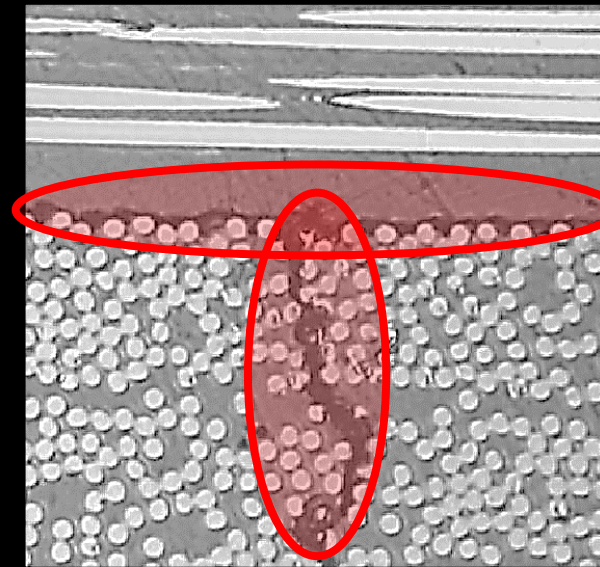
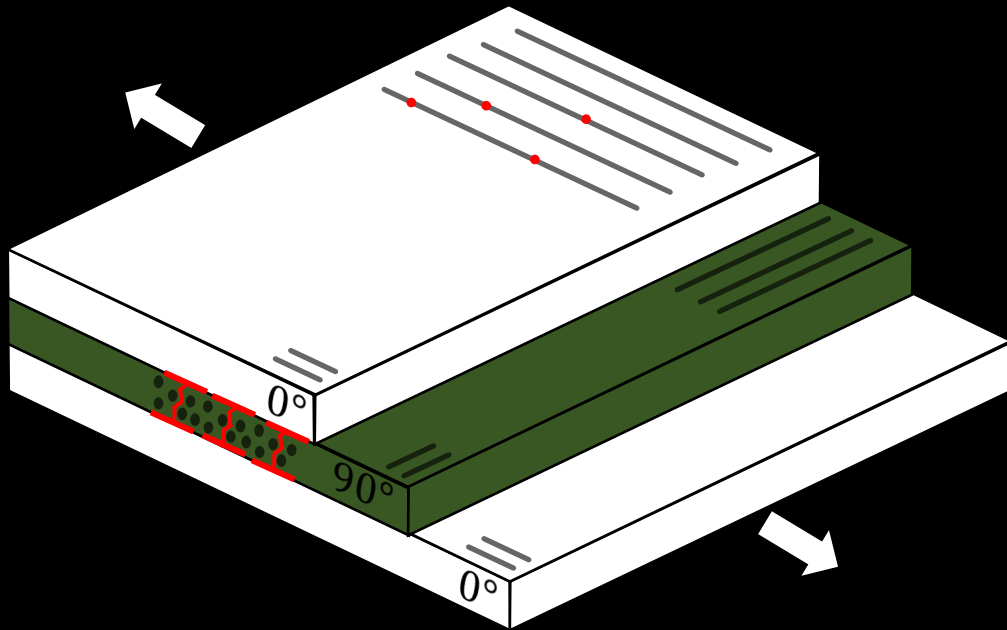
Yentl Swolfs, Arsen Melnikov, Larissa Gorbatikh, Stepan Lomov



28-03-2023



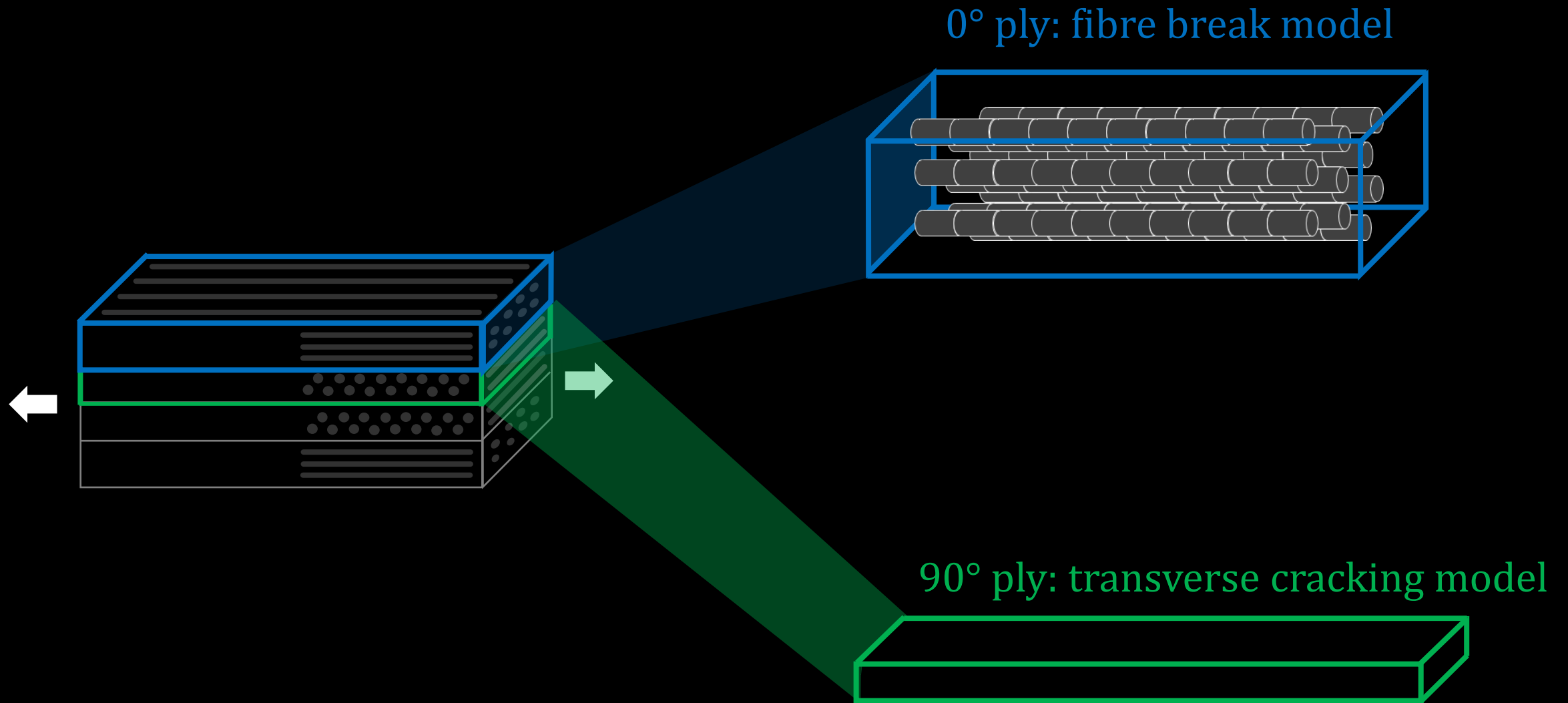
# Damage development in cross-ply laminates



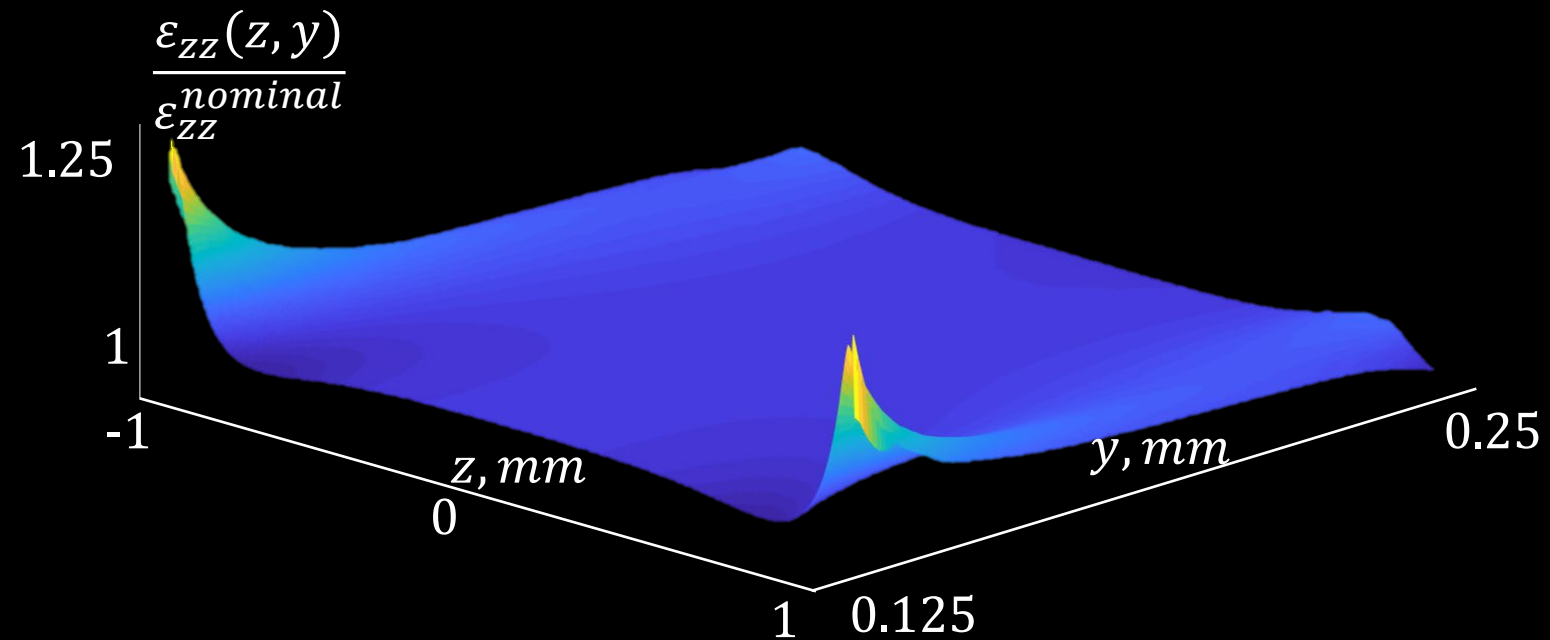
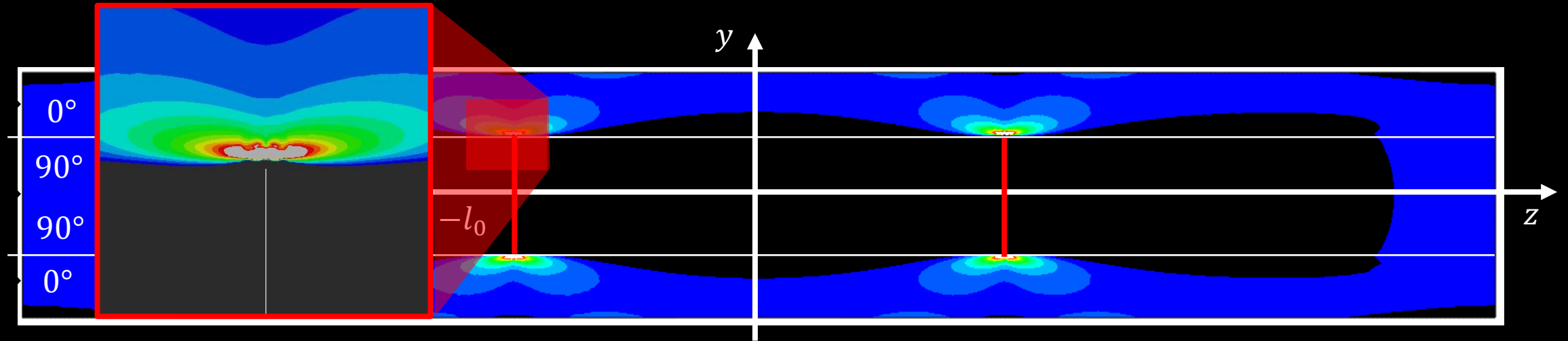
Debondt, 2017



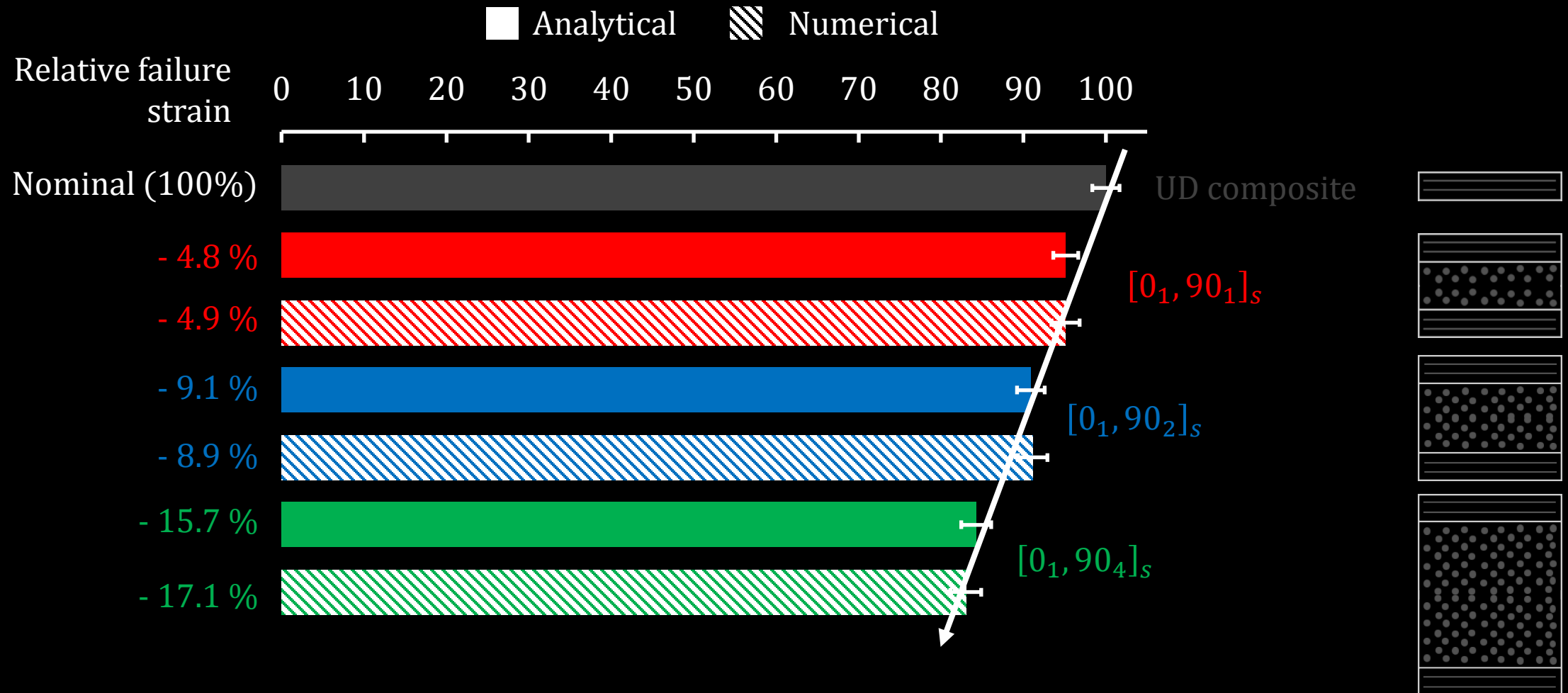
# Basic concept of cross-ply fibre break model



# Longitudinal stress concentrations in 0° ply



# Predicted failure strain reduction



# Open questions

Delaminations around transverse crack tips?

45° instead of 90° cracks?

Larger stiffness degradation

Not concentrated in one cross-section